

15 cm - 5 ²⁹/₃₂"

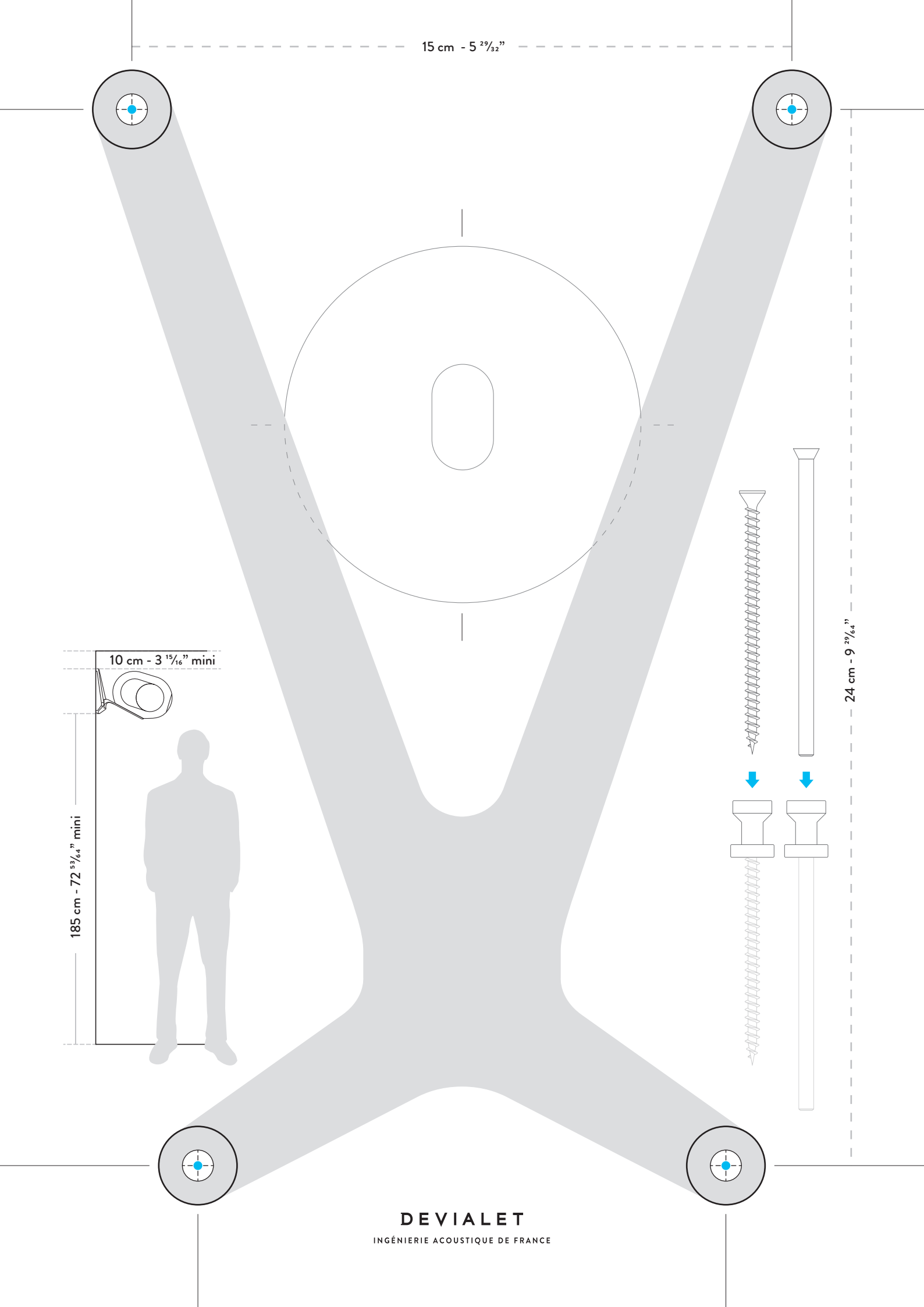
10 cm - 3 ¹⁵/₁₆" mini

185 cm - 72 ⁵³/₆₄" mini

24 cm - 9 ²⁹/₆₄"

DEVIALET

INGÉNIERIE ACOUSTIQUE DE FRANCE



GECKO KIT DE PERÇAGE

Pour éviter tout risque de chute, incendie et électrocution, veuillez vous assurer que les instructions suivantes sont bien comprises.

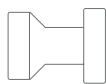
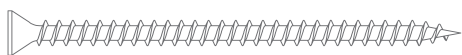
- Suivez l'ensemble de ces instructions, lisez le document dans sa totalité.
- Respectez scrupuleusement le gabarit fourni pour percer les trous dans le mur sur lequel le support mural Gecko sera installé.
- Assurez-vous que le mur sur lequel le support mural GECKO sera installé est plan et vertical.
- Assurez-vous que le mur sur lequel le support mural GECKO sera installé est non détérioré, et qu'il est capable de soutenir 25 kg par point de fixation.
- Utilisez uniquement les vis et chevilles fournies par DEVIALET pour le montage de GECKO.
- Pour chaque type de support, utilisez la combinaison VIS+CHEVILLE+EMBOUT indiquée ci-dessous (1,2,3).
- Au moment de percer le mur, assurez-vous que le foret est au bon diamètre et adapté au support.
- Faites toujours l'installation à deux personnes.

1 – Murs en matériau plein (pierre naturelle, béton, béton cellulaire, brique pleine, bloque de plâtre) ou en parpaing béton :

4 Chevilles Ø6 x 50 mm

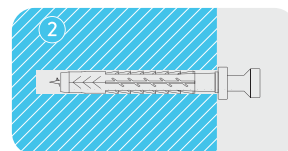
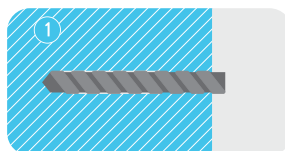


4 Vis Ø4 x 60 mm + Embout



Profondeur de perçage (minimum) : 60 mm

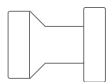
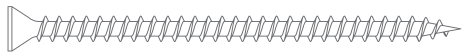
Diamètre de perçage : 6 mm



⚠ Vérifier que ni la vis ni la cheville ne tournent dans le vide.

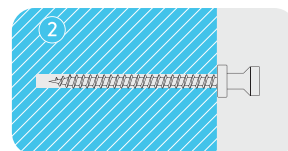
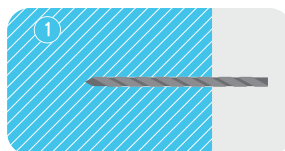
2 – Murs en bois massif :

4 Vis Ø6 x 60 mm + Embout



Profondeur de perçage (minimum) : 60 mm

Diamètre de perçage : 2 mm

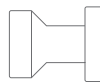
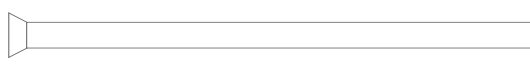


3 – Plaques de plâtre de 13 mm :

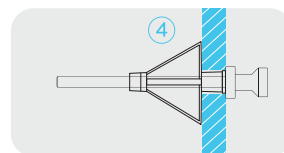
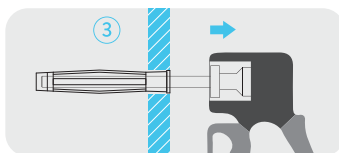
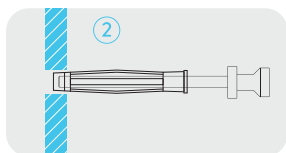
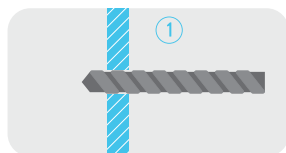
4 Chevilles Ø8 x 46 mm



4 Vis Devialet M4 x 70 mm + Embout



Diamètre de perçage : 8 mm



Vérifier que ni la vis ni la cheville ne tournent dans le vide.

Ne pas fixer sur brique creuse.

⚠ Si vous n'êtes pas sûr de vous ou si vous n'avez pas compris le contenu de cette notice, ne montez pas le support mural GECKO et adressez-vous à un professionnel.

Avertissement : une plaque de plâtre d'épaisseur inférieure à 13 mm ne permet pas de garantir 25 kg par point de fixation.

DEVIALET

INGÉNIERIE ACOUSTIQUE DE FRANCE

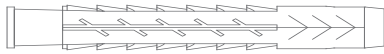
GECKO DRILLING KIT

To avoid fire, electric shock or other hazards, please make sure that you fully understand the following instructions.

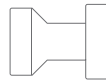
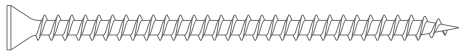
- Follow all of these instructions, read the document in its entirety.
- Always respect the drilling template.
- Make sure that the wall on which the GECKO wall bracket will be installed is flat and vertical.
- Make sure that the wall on which the GECKO wall bracket will be installed is not damaged, and that it can hold 25 kg - 55 lbs per attachment point.
- Only use the screws and anchors provided by DEVIALET for a GECKO mounting.
- Use the combination SCREW + ANCHOR + CAP for each type of surface, as indicated below (1,2,3).
- Before you start to drill through the wall, make sure you have the right diameter of drill bit and that it is adapted to the surface you will be drilling.
- You must never proceed to the mounting by yourself. Make sure you've got help.

1 – For walls made of solid material (natural stone, concrete, cellular concrete, solid brick):

4 Anchors Ø6 x 50 mm

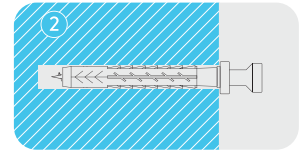
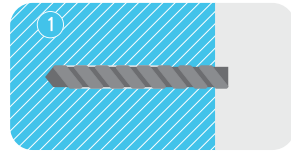


4 Screws Ø4 x 60 mm + Cap



Minimum drilling depth : 60 mm - 2 ³/₆₄"

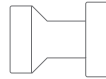
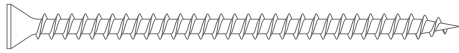
Hole diameter : 6 mm - 0 ¹⁵/₆₄"



Check that both the screw and the anchor fit the hole and that a firm grip is achieved.

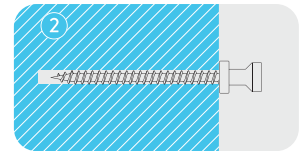
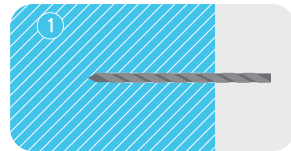
2 – For solid wood walls:

4 Screws Ø6 x 60 mm + Cap



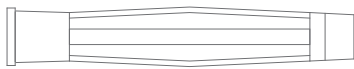
Minimum drilling depth : 60 mm - 2 ³/₆₄"

Hole diameter : 2 mm 0 ⁵/₆₄"

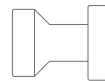


3 – For hollow surfaces, with a 13 mm - 0 ³³/₆₄" plasterboard thickness:

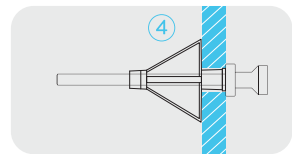
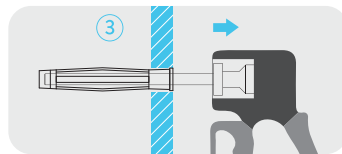
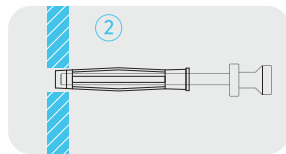
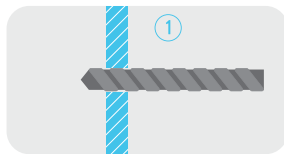
4 Anchors Ø8 x 46 mm



4 Screws Devialet M4 x 70 mm + Cap



Hole diameter : 8 mm - 0 ⁵/₁₆"



Check that both the screw and the anchor fit the hole and that a firm grip is achieved.
Do not mount it in hollow bricks.

If you are not sure of what to do or if you have not understood the content of this manual, do not mount the GECKO wall bracket. Instead, ask a professional.
Warning: Plasterboards thinner than 13 mm - 0 ³³/₆₄" cannot guarantee 25 kg - 55 lbs per fixing point.

DEVIALET

INGÉNIERIE ACOUSTIQUE DE FRANCE

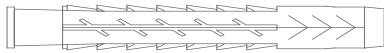
GECKO KIT DE PERFORACIÓN

Para evitar que se pueda caer, cualquier riesgo de incendio o de descarga eléctrica, asegúrese de que se hayan comprendido correctamente las siguientes instrucciones.

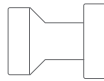
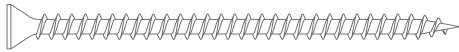
- Siga todas las instrucciones y lea el documento completo.
- Respete siempre la plantilla para el esquema de taladros.
- Asegúrese de que la pared en la que se va a instalar el soporte de pared GECKO sea plana y vertical.
- Compruebe que la pared sobre la que se va a instalar el soporte de pared GECKO no esté deteriorada, y que pueda sostener 25 kg en cada punto de fijación.
- Utilice únicamente los tornillos y los tacos proporcionados por DEVIALET para el montaje de GECKO.
- Para cada tipo de soporte, utilice la combinación TORNILLO+TACO+RACOR indicada a continuación (1,2,3).
- Cuando vaya a taladrar la pared, asegúrese de que la broca tenga el diámetro exacto y adecuado al soporte.
- La instalación debe siempre ser llevada a cabo por dos personas.

1 – Paredes de material macizo (piedra natural, hormigón, hormigón celular, ladrillo macizo, placa de cartón-yeso) o de bloques de hormigón:

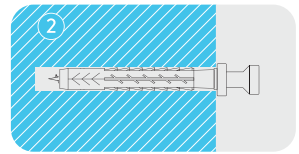
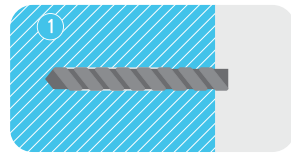
4 Tacos Ø6 x 50 mm



4 Tornillos Ø4 x 60 mm + Racor



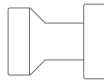
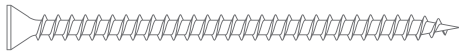
Profundidad del agujero (mínimo) : 60 mm
Diámetro del agujero : 6 mm



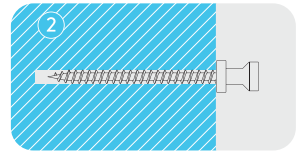
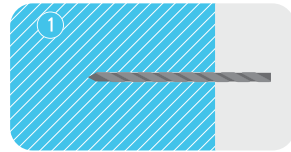
⚠ Compruebe que ni el tornillo ni el taco giren en vacío.

2 – Paredes de madera maciza:

4 Tornillos Ø6 x 60 mm + Racor



Profundidad del agujero (mínimo) : 60 mm
Diámetro del agujero : 2 mm



3 – Para la placa de cartón-yeso de 13 mm:

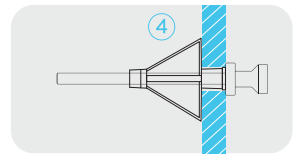
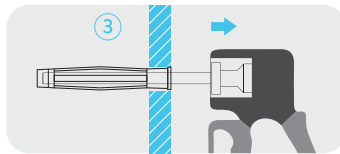
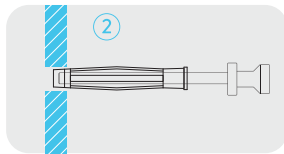
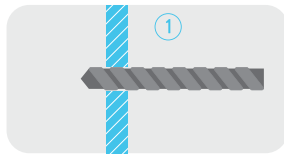
4 Tacos Ø8 x 46 mm



4 Tornillos Devialet M4 x 70 mm + Racor



Diámetro del agujero : 8 mm



Compruebe que ni el tornillo ni el taco giren en vacío.
No lo monte sobre un ladrillo hueco.

Si no está seguro de que pueda instalarlo solo o no ha comprendido el contenido de estas instrucciones, no monte el soporte de pared GECKO y diríjase a un profesional.
Advertencia: Una placa de cartón-yeso de grosor inferior a 13 mm no soporta los 25 kg necesarios de cada punto de fijación.

DEVIALET

INGÉNIERIE ACOUSTIQUE DE FRANCE

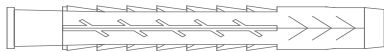
GECKO BEFESTIGUNGSSET

Um mögliche Sturzgefahren, Brände und Stromschläge zu vermeiden müssen die nachfolgenden Anweisungen gut beachtet werden.

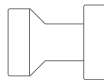
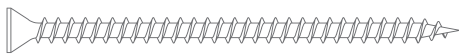
- Befolgen Sie alle Anweisungen und lesen Sie die Unterlage ausführlich durch.
- Benutzen Sie immer die Bohrschablone.
- Versichern Sie sich, dass die Wand, an die der GECKO-Träger angebracht wird, flach und senkrecht ist.
- Versichern Sie sich, dass die Wand, an die der GECKO-Träger angebracht wird, keine Schäden aufweist und eine Last von 25 Kg pro Befestigungspunkt aushält.
- Benutzen Sie zum Montieren von GECKO ausschließlich die von DEVIALET gelieferten Schrauben und Dübel.
- Benutzen Sie für jede Art von Träger die weiter unten angegebene Kombination SCHRAUBE+DÜBEL+AUFSATZ (Punkte 1, 2, 3).
- Überprüfen Sie, bevor Sie das Loch in die Wand bohren, dass der Bohrer die passende Größe hat und für den Träger geeignet ist.
- Arbeiten Sie bei der Anbringung immer zu zweit.

1 – Wände aus vollem Material (Naturstein, Beton, Zellbeton, voller Ziegelstein, Gipsplatte) oder aus Betonhohlblockstein:

4 Dübel Ø6 x 50 mm

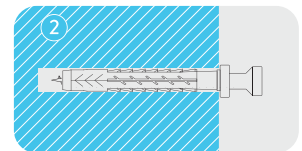
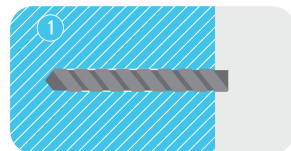


4 Schrauben Ø4 x 60 mm + Aufsatz



Bohrungstiefe (Minimum) : 60 mm

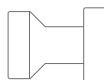
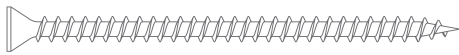
Bohrungsdurchmesser : 6 mm



⚠ Überprüfen Sie, dass weder die Schraube, noch der Dübel Leerlauf haben.

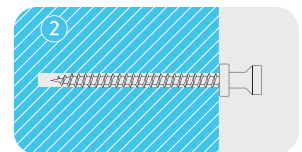
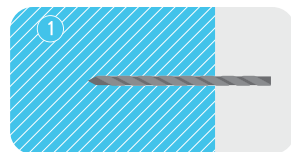
2 – Wände aus Massivholz:

4 Schrauben Ø6 x 60 mm + Aufsatz



Bohrungstiefe (Minimum) : 60 mm

Bohrungsdurchmesser : 2 mm

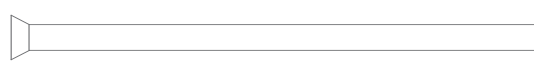


3 – Für 13mm-Gipsplatte:

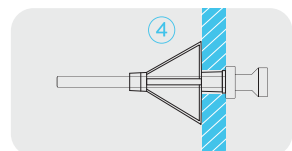
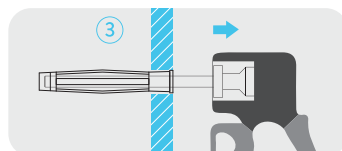
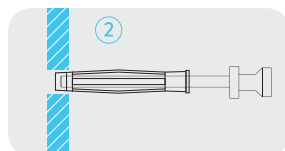
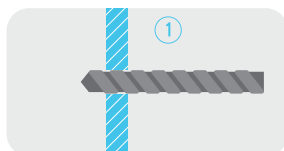
4 Dübel Ø8 x 46 mm



4 Schrauben Devialet M4 x 70 mm + Aufsatz



Bohrungsdurchmesser : 8 mm



⚠ Überprüfen Sie, dass weder die Schraube, noch der Dübel Leerlauf haben.

Keine Anbringung auf hohlem Ziegelstein.

Sollten Sie sich nicht sicher sein oder den Inhalt dieser Gebrauchsanweisung nicht verstehen, bauen Sie den GECKO-Wandträger nicht selber an, sondern wenden Sie sich an einen Fachmann.

Achtung: Eine weniger als 13 mm dicke Gipsplatte hält eventuell keine 25 Kg pro Befestigungspunkt aus!

DEVIALET

INGÉNIERIE ACOUSTIQUE DE FRANCE

Nom de fichier	10560S_gecko_gabarit_V4	
Référence	10560S	
Descriptif	Gabarit de perçage pour Gecko	
Dimensions	210 x 300 mm + découpe à la planche des trous	
Matière	carte couché 350gr	
Impression	quadri R°	
Certificat UL	non	
échelle	1:1	DEVIALET 24/02/2017

Version	Description	Approuvé par
001	création	Sylvain P.
004	MAJ	Sylvain P